

# LOW MINERAL DENSITY OF A WEIGHT-BEARING BONE AMONG ADULT WOMEN IN A HIGH FERTILITY POPULATION

Jonathan Stieglitz et al.

Figure S1. Estimated calcaneal BMD by reproductive status among pre-menopausal Tsimane women (n = 86). Boxes cover the interquartile range (IQR), midlines represent medians, whiskers represent values within 1.5 IQR from the first or third quartile, and circles represent outliers >1.5 IQR.

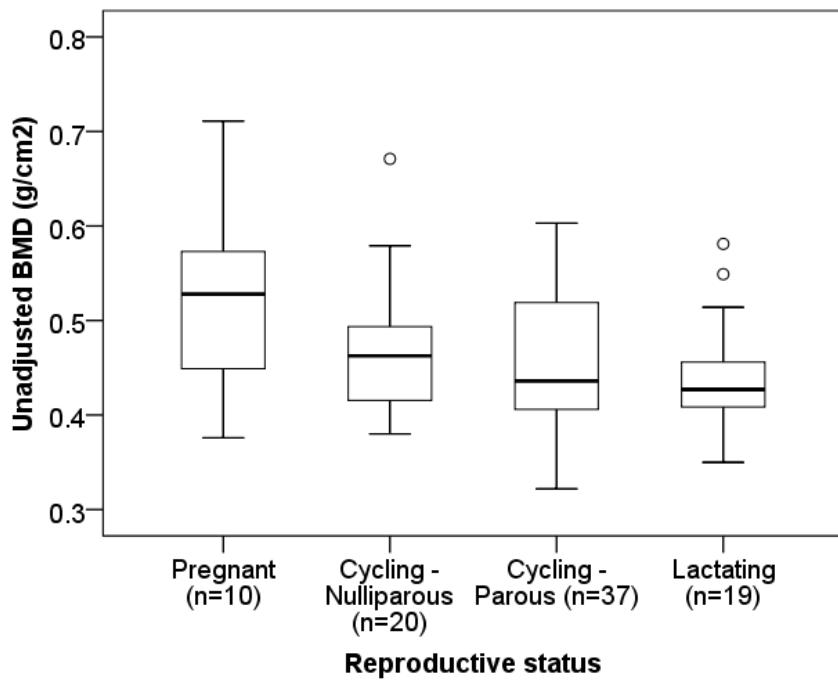


Figure S2. Estimated calcaneal BMD ( $\pm$  SE) by parity category among pre- ( $n = 66$ ) and post-menopausal ( $n = 44$ ) parous Tsimane women. Predicted values are obtained from OLS regression including age and weight as controls. For pre-menopausal women lactating and pregnant dummies are also included as controls.

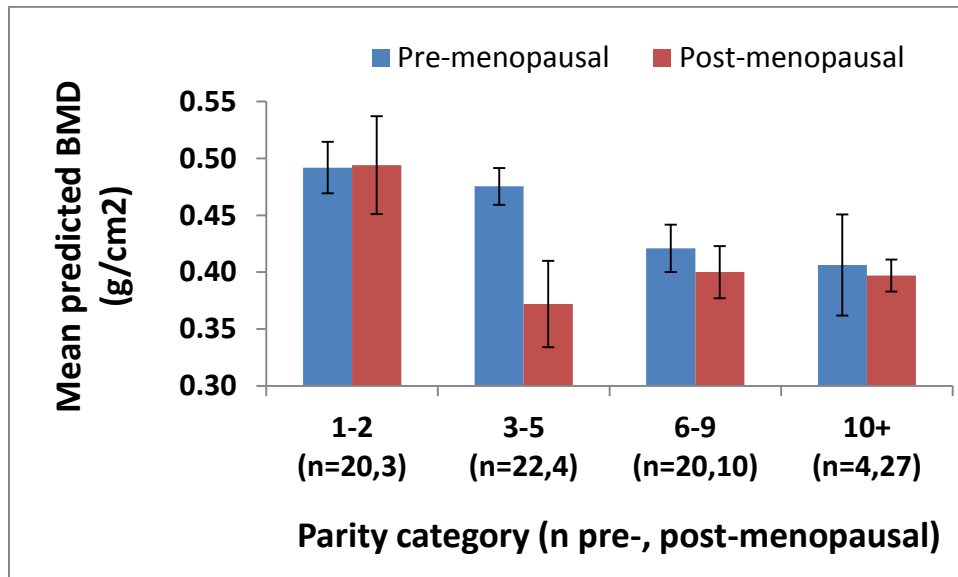


Figure S3. Estimated calcaneal BMD by number of births among post-menopausal Tsimane women (n = 44). A horizontal line indicates the post-menopausal mean.

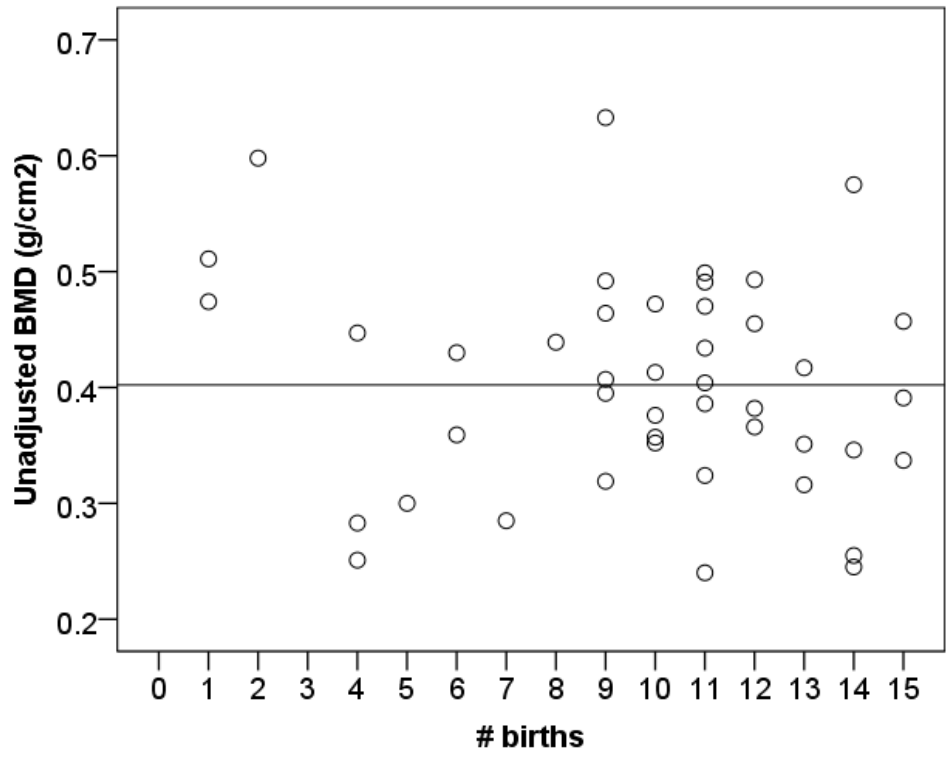


Figure S4. Partial OLS regression plot of estimated calcaneal BMD by mean IBI among multiparous post-menopausal Tsimane women (controlling for age and weight, n = 41).

