

## **Supplemental Materials**

**Cognitive Performance Across the Life Course of Bolivian Forager-Farmers with Limited Schooling**

**by M. Gurven et al., 2016, *Developmental Psychology***

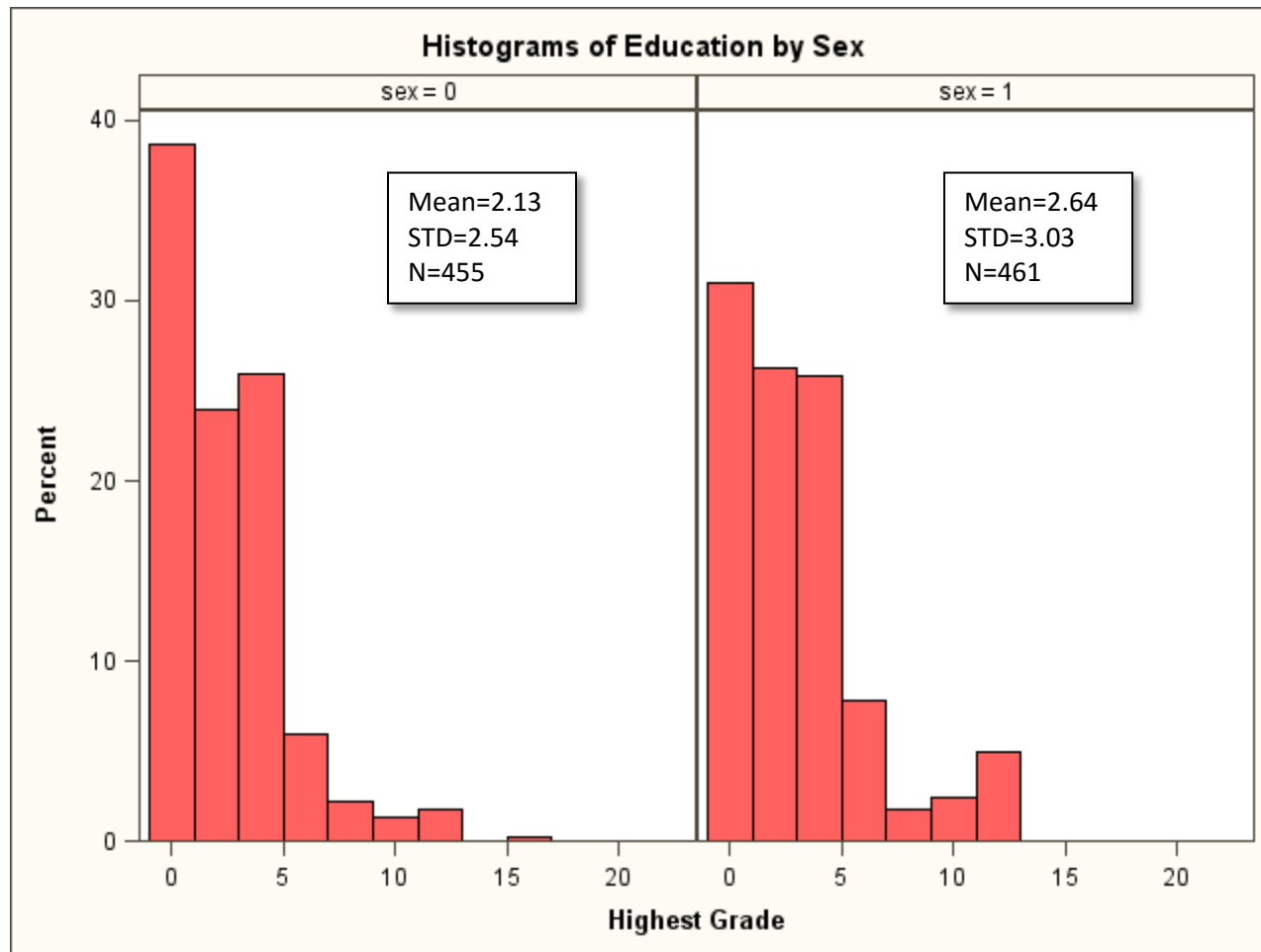
**<http://dx.doi.org/10.1037/dev0000175>**

## **Supplementary Materials**

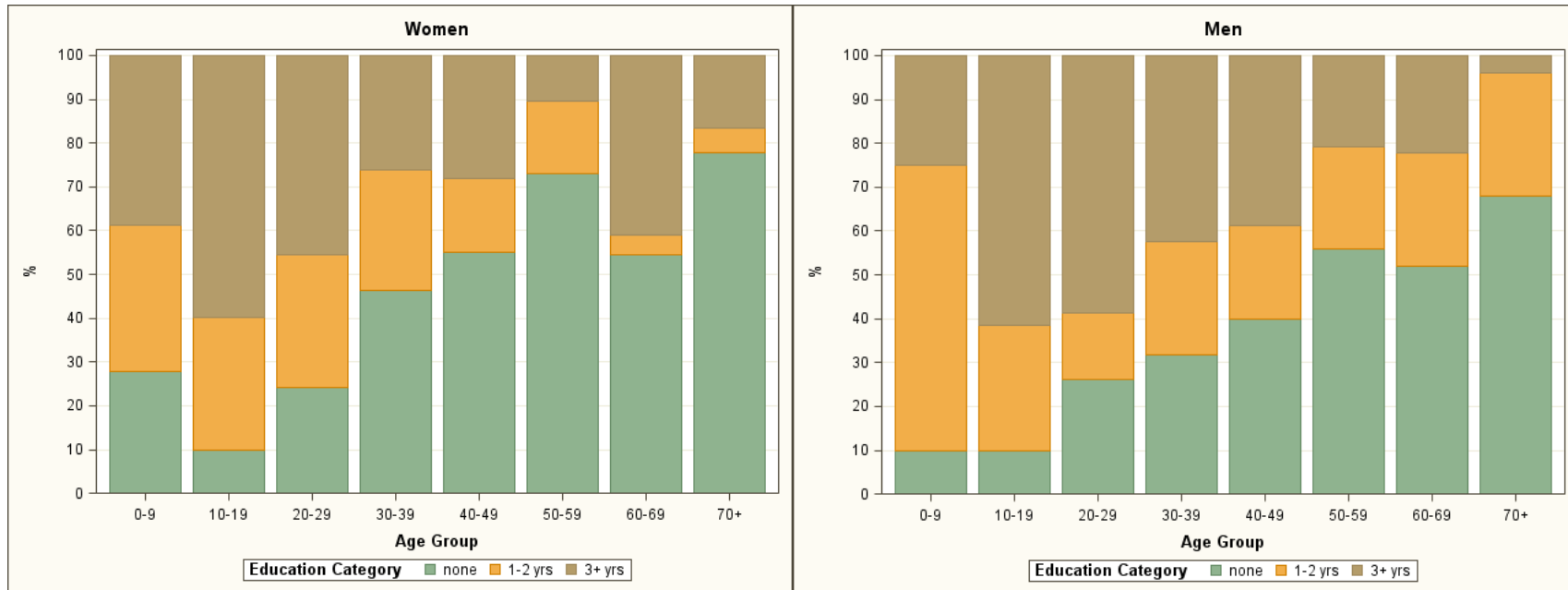
4 Supplementary Figures

1 Supplementary Table

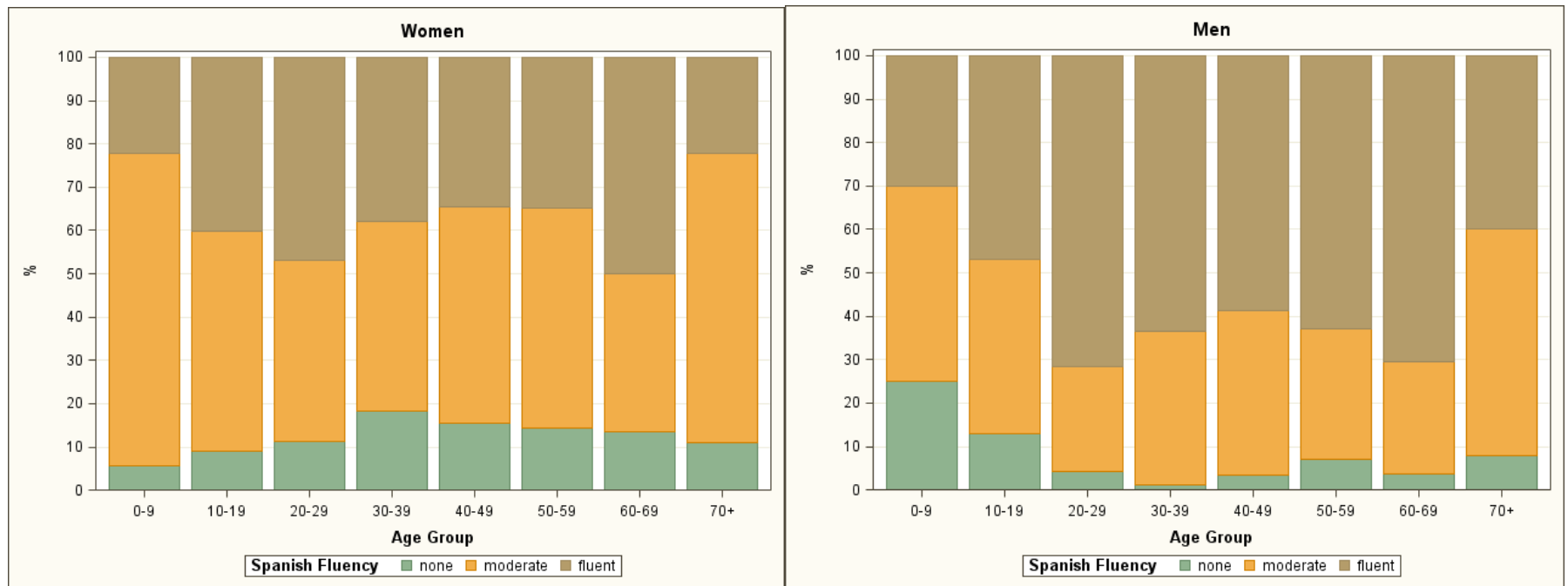
**Figure S1.** Frequency Distribution of Schooling by Sex (0=female, 1=male).



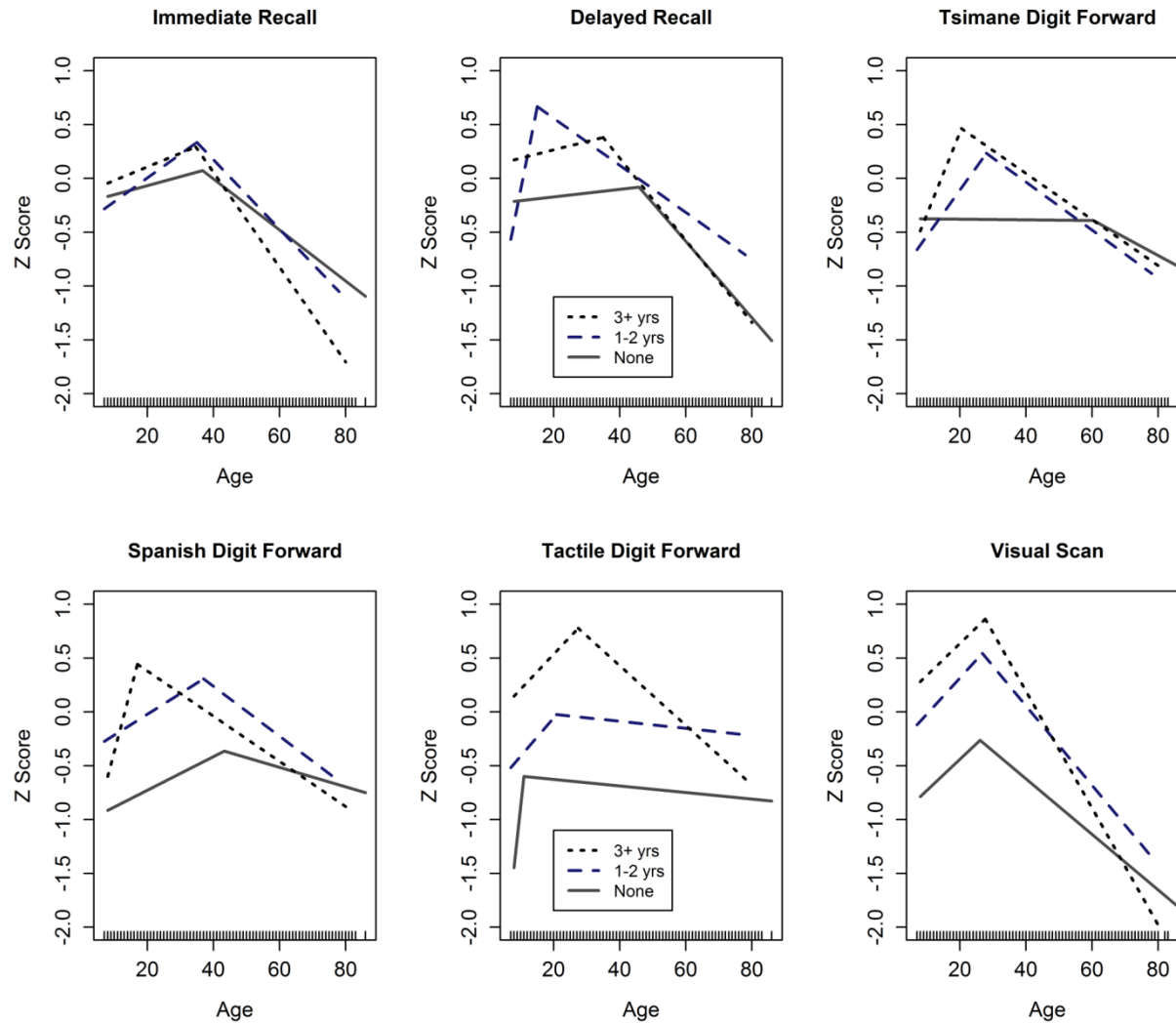
**Figure S2.** Stacked histograms of Educational Attainment by Age and Sex.



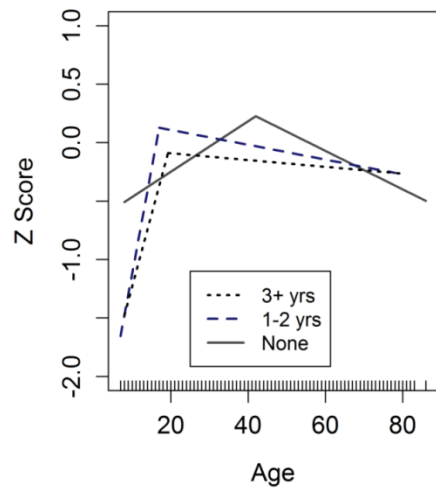
**Figure S3.** Stacked Histograms of Spanish Fluency by Age and Sex. Spanish fluency is an average measure of Spanish speaking ability and writing ability, each ranked on a five point scale (0 to 4). Categories here defined as none (<0.5), moderate (0.5 to 2.5) and fluent (>2.5).



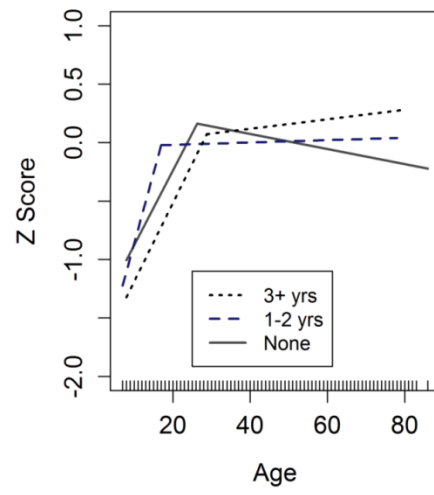
**Figure S4.** Segmented linear regression predicting peak age of performance for cognitive subtasks, grouped by three levels of educational attainment.



**Category Fluency (Animals)**



**Category Fluency (Fish)**



**Table S1.** Schooling effects as a function of village history and quality of schooling (captured by the variable “Village School Level”). Similar to Table 8 in main text, but results shown here for each cognitive task.

| <b>Predictor</b>           | Short-Term Recall<br><b>est.</b> | Long-Term Recall<br><b>est.</b> | Tsimane Digit Forward<br><b>est.</b> | Spanish Digit Forward<br><b>est.</b> | Spatial Forward<br><b>est.</b> | Visual Scan<br><b>est.</b> | Animal Fluency<br><b>est.</b> | Fish Fluency<br><b>est.</b> |
|----------------------------|----------------------------------|---------------------------------|--------------------------------------|--------------------------------------|--------------------------------|----------------------------|-------------------------------|-----------------------------|
| Intercept                  | 0.267                            | -0.680                          | -0.730                               | -0.672                               | -0.736***                      | -0.332                     | -1.638                        | -1.806                      |
| Age                        | 0.025***                         | 0.024***                        | 0.024***                             | 0.019**                              | 0.017**                        | 0.018***                   | 0.068***                      | 0.067***                    |
| Age <sup>2</sup>           | -0.000***                        | -0.000***                       | -0.000***                            | -0.000***                            | -0.000***                      | -0.001***                  | -0.001***                     | -0.001***                   |
| Sex                        | 0.287**                          | 0.030                           | 0.336***                             | 0.538***                             | 0.515***                       | 0.296***                   | 0.504***                      | 0.479***                    |
| Grade                      | 0.122**                          | 0.132**                         | 0.051                                | 0.094*                               | 0.256***                       | 0.207***                   | 0.018                         | 0.039                       |
| Grade <sup>2</sup>         | -0.008*                          | -0.012**                        | 0.003                                | -0.001                               | -0.012***                      | -0.012***                  | 0.001                         | -0.002                      |
| Spanish                    | -0.295***                        | 0.339***                        | 0.143†                               | 0.132                                | 0.022                          | 0.038                      | 0.026                         | 0.089                       |
| Spanish <sup>2</sup>       | 0.023                            | -0.049**                        | -0.028                               | -0.019                               | 0.012                          | 0.009                      | -0.001                        | -0.022                      |
| Sex*Grade                  | -0.074                           | -0.049                          | 0.031                                | -0.112*                              | -0.143**                       | -0.022                     | -0.042                        | -0.049                      |
| Sex*Grade <sup>2</sup>     | 0.009†                           | 0.009†                          | -0.005                               | 0.007                                | 0.009*                         | 0.003                      | 0.003                         | 0.005                       |
| Village School Level       |                                  |                                 |                                      |                                      |                                |                            |                               |                             |
| (low vs. high)             | -0.440*                          | -0.096                          | -0.236*                              | -0.431***                            | -0.590***                      | -0.654***                  | 0.301†                        | 0.421**                     |
| (moderate vs. high)        | -0.184                           | 0.161                           | 0.091                                | -0.006                               | -0.148                         | -0.148                     | 0.13                          | 0.199                       |
| Grade*Village School Level |                                  |                                 |                                      |                                      |                                |                            |                               |                             |
| (low vs. high)             | 0.003                            | -0.084†                         | 0.014                                | 0.002                                | -0.043                         | -0.057                     | -0.053                        | 0.000                       |
| (moderate vs. high)        | -0.059†                          | -0.044                          | -0.020                               | -0.052                               | -0.033                         | -0.069*                    | 0.039                         | 0.034                       |